



price list February  
2024 No.5.0

RET



# KNOTRINGS simple

Knots connect, hold and embellish. In metal, they symbolize eternal unity and can never be untied. As a stylistic element, knots are convincing in various dimensions: massive or filigreed, crafted from stainless steel or precious metal, simple or with brilliant-cut diamonds, as rings for the ears or the fingers.

## # 300

simple  
knot tightly  
knotted

300 / 1,5



300 / 2,0



300 / 2,5



300 / 4,0



### material

### retail €

#### 1,5 mm band width\*

yellow or rose gold 750	800,00
white gold 750	870,00
platinum 950	880,00
* sizes over 59 in Au and Pt + // over 65 + double	55,00
stainless steel bright oder black	350,00

#### 2 mm band width\*

yellow or rose gold 750	1225,00
white gold 750	1350,00
platinum 950	1350,00
* sizes over 59 in Au and Pt + // over 65 + double	75,00
stainless steel bright oder black	375,00

#### 2,5 mm band width\*

yellow or rose gold 750	1770,00
white gold 750	1950,00
platinum 950	1900,00
* sizes over 59 in Au and Pt + // over 65 + double	125,00
stainless steel bright oder black	400,00

#### 3,2 mm band width\*

yellow or rose gold 750	2780,00
white gold 750	3050,00
platinum 950	2985,00
* sizes over 59 in Au and Pt + // over 65 + double	175,00
stainless steel bright oder black	450,00

#### 4 mm band width\*

yellow or rose gold 750	4400,00
white gold 750	4900,00
platinum 950	4800,00
* sizes over 59 in Au and Pt + // over 65 + double	300,00
stainless steel bright oder black	525,00

# KNOTRINGS pure

**# 301**  
perfishermans'  
knot

301 / 1,5



301 / 3,2



301 / 2,5



300.1 / 2,5

**# 300.1**  
knotring  
relaxed tied

material	retail €
<b>1,5</b> mm band width*	
yellow or rose gold 750	1020,00
white gold 750	1120,00
platinum 950	1150,00
* sizes over 59 in Au and Pt + // over 65 + double	55,00
stainless steel bright or black	400,00

<b>2,0</b> mm band width*	
yellow or rose gold 750	1580,00
white gold 750	1720,00
platinum 950	1740,00
* sizes over 59 in Au and Pt + // over 65 + double	75,00
stainless steel bright or black	400,00

<b>2,5</b> mm band width*	
yellow or rose gold 750	2200,00
white gold 750	2450,00
platinum 950	2400,00
* sizes over 59 in Au and Pt + // over 65 + double	125,00
stainless steel bright or black	425,00

<b>3,2</b> mm band width*	
stainless steel bright or black	475,00

<b>2,0</b> mm band width*	
yellow or rose gold 750	1580,00
white gold 750	1740,00
platinum 950	1740,00
* sizes over 59 in Au and Pt + // over 65 + double	75,00
stainless steel bright or black	400,00

<b>2,5</b> mm band width*	
yellow or rose gold 750	1925,00
white gold 750	2120,00
platinum 950	2100,00
* sizes over 59 in Au and Pt + // over 65 + double	125,00
stainless steel bright or black	425,00

<b>3,2</b> mm band width*	
yellow or rose gold 750	2690,00
white gold 750	3000,00
platinum 950	2900,00
yellow or rose gold 750	175,00
stainless steel bright or black	475,00

<b>4</b> mm band width*	
stainless steel bright oder black	525,00

# KNOTRINGS simple with diamonds

Now they sparkle. brilliant-cut diamonds, set in pavé, accentuate the sinuous lines, and the viewer's gaze follows them. With colour and light, they carry the meaning of the symbol directly into the heart.



## # 300.P

Knot closely tied with diamonds



### material

### retail €

1,5 mm width* / 17 diamonds 0,03 ct	
yellow or rose gold 750 / dia. TWvs	1450,00
white gold 750 / dia. TWvs	1520,00
platinum 950 / Brill. TWvs	1550,00
* sizes over 59 in Au and Pt + // over 65 + double	55,00
stainless steel bright or black / dia. TWvs	880,00
stainless steel black / dia. black	795,00

### 2 mm width\* / 17 diamonds 0,07 ct

yellow or rose gold 750 / dia. TWvs	1920,00
white gold 750 / dia. TWvs	2050,00
platinum 950 / dia. TWvs	2100,00
* sizes over 59 in Au and Pt + // over 65 + double	75,00
stainless steel bright or black / dia. TWvs	900,00
stainless steel black / dia. black	820,00

### 2,5 mm width\* / 31 diamonds 0,15 ct

yellow or rose gold 750 / dia. TWvs	2920,00
rose gold 750 / dia. C2 light brown	2700,00
white gold 750 / dia. TWvs	3120,00
platinum 950 / dia. TWvs	3050,00
* sizes over 59 in Au and Pt + // over 65 + double	125,00

### 3,2 mm width\* / 67 diamonds 0,47 ct

yellow or rose gold 750 / dia. TWvs	5700,00
rose gold 750 / dia. C2 light brown	4900,00
white gold 750 / dia. TWvs	6050,00
platinum 950 / dia. TWvs	5950,00
* sizes over 59 in Au and Pt + // over 65 + double	175,00

### 4 mm width\* / 65 diamonds 0,90 ct

yellow or rose gold 750 / dia. TWvs	8200,00
rose gold 750 / dia. C2 light brown	7250,00
white gold 750 / dia. TWvs	8800,00
platinum 950 / dia. TWvs	8650,00
* sizes over 59 in Au and Pt + // over 65 + double	300,00

# KNOTRINGS relaxed tied with diamonds



## # 300.1.P

Knot relaxed tied  
+ diamonds



material	retail €
<b>2,5</b> mm width* / 47 diamonds 0,19 ct	
yellow or rose gold 750 / dia. TWvs	3550,00
rose gold 750 / dia. C2 light brown	3200,00
withe gold 750 / dia. TWvs	3750,00
yellow gold 750 / dia. yellow nat.	3400,00
platinum 950 / dia. TWvs	3700,00
* sizes over 59 in Au and Pt + // over 65 + double	125,00

<b>3,2</b> mm width* / 54 diamonds 0,38 ct	
yellow or rose gold 750 / dia. TWvs	5180,00
rose gold 750 / dia. C2 light brown	4520,00
withe gold 750 / dia. TWvs	5500,00
yellow gold 750 / dia. yellow nat.	5000,00
platinum 950 / dia. TWvs	5400,00
* sizes over 59 in Au and Pt + // over 65 + double	175,00

<b>4</b> mm width* / 54 diamonds 0,70 ct	
yellow or rose gold 750 / dia. TWvs	8150,00
rose gold 750 / dia. C2 light brown	7380,00
withe gold 750 / dia. TWvs	8800,00
yellow gold 750 / dia. yellow nat.	8300,00
platinum 950 / dia. TWvs	8600,00
* sizes over 59 in Au and Pt + // over 65 + double	300,00

## # 300.2.P

Knot relaxed tied  
+ diamonds  
on two sides of the knot  
and further out



<b>2,5</b> mm width* / 65 diamonds 0,30 ct	
yellow or rose gold 750 / dia. TWvs	4200,00
rose gold 750 / dia. C2 light brown	3650,00
withe gold 750 / dia. TWvs	4350,00
yellow gold 750 / dia. yellow nat.	3980,00
platinum 950 / dia. TWvs	4350,00
* sizes over 59 in Au and Pt + // over 65 + double	125,00

<b>3,2</b> mm width* / 54 diamonds 0,70 ct	
yellow or rose gold 750 / dia. TWvs	5950,00
rose gold 750 / dia. C2 light brown	5050,00
withe gold 750 / dia. TWvs	6300,00
yellow gold 750 / dia. yellow nat.	5800,00
platinum 950 / dia. TWvs	6200,00
* sizes over 59 in Au and Pt + // over 65 + double	175,00

## # 300.3.P

Knot relaxed tied  
+ diamonds



<b>2,5</b> mm width / 25 diamonds 0,12 ct	
stainless steel bright or black / dia. TWvs	1550,00
stainless steel black / dia. black	1280,00

<b>3,2</b> mm width / 31 diamonds 0,22 ct	
stainless steel bright or black / dia. TWvs	2080,00
stainless steel black / dia. black	1550,00

<b>4</b> mm width / 31 diamonds 0,40 ct	
stainless steel bright or black / dia. TWvs	2750,00
stainless steel black / dia. black	1950,00

# ENDLESS BAND 2-times pure

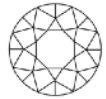
This ring embodies a special idea of winding, it is formed like a lemniscate (a horizontal figure-of-eight), the symbol of infinity and eternity.



material	retail €
<b>1,5 mm band width*</b>	
yellow or rose gold 750	1360,00
white gold 750	1480,00
platinum 950	1480,00
* sizes over 59 in Au and Pt + // over 65 + double	100,00
stainless steel bright or black	425,00
<b>2 mm band width*</b>	
yellow or rose gold 750	1920,00
white gold 750	2120,00
platinum 950	2100,00
* sizes over 59 in Au and Pt + // over 65 + double	150,00
stainless steel bright or black	450,00
<b>2,5 mm band width*</b>	
yellow or rose gold 750	2620,00
white gold 750	2920,00
platinum 950	2850,00
* sizes over 59 in Au and Pt + // over 65 + double	250,00
stainless steel bright or black	475,00
<b>3,2 mm band width*</b>	
yellow or rose gold 750	3585,00
white gold 750	3990,00
platinum 950	3850,00
* sizes over 59 in Au and Pt + // over 65 + double	350,00
stainless steel bright or black	500,00
<b>4 mm band width*</b>	
stainless steel bright or black	550,00

# ENDLESS BAND 2-times diamonds

This ring embodies a special idea of winding, it is formed like a lemniscate (a horizontal figure-of-eight), the symbol of infinity and eternity.



## # 340.P

2-times around the finger + diamonds



Knotring simple in combination with an Endless band 2-times



300.P / 1,5

340.P / 1,5



340.P / 1,5

341.P / 1,5

### material

### retail €

#### 1,5 mm band width\* / 23 diamonds 0,07 ct

yellow or rose gold 750 / dia. TWvs	2150,00
withe gold 750 / dia. TWvs	2250,00
platinum 950 / Brill. TWvs	2300,00
* sizes over 59 in Au and Pt + // over 65 + double	100,00
stainless steel bright or black / dia. TWvs	1320,00
stainless steel black / dia. black	1150,00

#### 2 mm band width\* / 23 diamonds 0,09 ct

yellow or rose gold 750 / dia. TWvs	2890,00
withe gold 750 / dia. TWvs	3050,00
platinum 950 / Brill. TWvs	2980,00
* sizes over 59 in Au and Pt + // over 65 + double	150,00
stainless steel bright or black / dia. TWvs	1420,00
stainless steel black / dia. black	1220,00

#### 2,5 mm band width\* / 23 diamonds 0,11 ct

yellow or rose gold 750 / dia. TWvs	3550,00
rose gold 750 / dia. C2 light brown	3350,00
withe gold 750 / dia. TWvs	3800,00
platinum 950 / dia. TWvs	3700,00
* sizes over 59 in Au and Pt + // over 65 + double	250,00
stainless steel bright or black / dia. TWvs	1540,00
stainless steel black / dia. black	1240,00

#### 3,2 mm band width\* / 13 diamonds 0,17 ct

yellow or rose gold 750 / dia. TWvs	4470,00
rose gold 750 / dia. C2 light brown	4250,00
withe gold 750 / dia. TWvs	4850,00
platinum 950 / dia. TWvs	4720,00
* sizes over 59 in Au and Pt + // over 65 + double	350,00
stainless steel bright or black / dia. TWvs	1500,00
stainless steel black / dia. black	1150,00

# ENDLESS BAND 3-times pure

This ring also originates from the idea of the lemniscate. the endlessness of its curving line got one extra winding.



## # 341

3-times around  
the finger



### material

### retail €

#### 1,5 mm band width\*

yellow or rose gold 750	1930,00
white gold 750	2120,00
platinum 950	2100,00
* sizes over 59 in Au and Pt + // over 65 + double	150,00
stainless steel bright or black	450,00

#### 2 mm band width\*

yellow or rose gold 750	2780,00
white gold 750	3080,00
platinum 950	3000,00
* sizes over 59 in Au and Pt + // over 65 + double	250,00
stainless steel bright or black	475,00

#### 2,5 mm band width\*

yellow or rose gold 750	3685,00
white gold 750	4100,00
platinum 950	3950,00
* sizes over 59 in Au and Pt + // over 65 + double	350,00
stainless steel bright or black	500,00

#### 3,2 mm band width\*

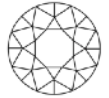
stainless steel bright or black	550,00
---------------------------------	--------

#### 4 mm band width\*

stainless steel bright or black	600,00
---------------------------------	--------



# ENDLESS BAND 3-times diamonds



**# 341.P**  
**3-times** around  
 the finger  
 + diamonds

material	retail €
<b>1,5</b> mm band width* / 23 diamonds 0,07 ct	
yellow or rose gold 750 / dia. TWVs	2720,00
withe gold 750 / dia. TWVs	2900,00
platinum 950 / Brill. TWVs	2900,00
* sizes over 59 in Au and Pt + // over 65 + double	150,00
stainless steel bright or black / dia. TWVs	1375,00
stainless steel black / dia. black	1200,00



<b>2</b> mm band width* / 23 diamonds 0,09 ct	
yellow or rose gold 750 / dia. TWVs	3675,00
withe gold 750 / dia. TWVs	3975,00
platinum 950 / Brill. TWVs	3850,00
* sizes over 59 in Au and Pt + // over 65 + double	250,00
stainless steel bright or black / dia. TWVs	1480,00
stainless steel black / dia. black	1280,00



<b>2,5</b> mm band width* / 23 diamonds 0,11 ct	
yellow or rose gold 750 / dia. TWVs	4560,00
rose gold 750 / dia. C2 light brown	4350,00
withe gold 750 / dia. TWVs	5200,00
platinum 950 / dia. TWVs	5050,00
* sizes over 59 in Au and Pt + // over 65 + double	350,00
stainless steel bright or black / dia. TWVs	1580,00
stainless steel black / dia. black	1320,00

<b>3,2</b> mm band width* / 16 diamonds 0,21 ct	
yellow or rose gold 750 / dia. TWVs	6275,00
rose gold 750 / dia. C2 light brown	6055,00
withe gold 750 / dia. TWVs	6950,00
platinum 950 / dia. TWVs	6580,00
* sizes over 59 in Au and Pt + // over 65 + double	500,00
stainless steel bright or black / dia. TWVs	1700,00
stainless steel black / dia. black	1250,00

# ENDLESS BAND 5-times pure

## # 345

5-times


**material**
**retail €**
**1,5 mm band width\***

yellow or rose gold 750	3280,00
white gold 750	3580,00
platinum 950	3400,00
* sizes over 59 in Au and Pt + // over 65 + double	225,00
stainless steel bright or black	600,00

**2,5 mm band width\***

stainless steel bright or black	625,00
---------------------------------	--------

# ENDLESS BAND 5-times diamonds



## # 345.P

5-times around the finger + diamonds


**1,5 mm band width\* / 27 diamonds 0,08 ct**

yellow or rose gold 750 / dia. TWvs	4250,00
white gold 750 / dia. TWvs	4520,00
platinum 950 / Brill. TWvs	4420,00
* sizes over 59 in Au and Pt + // over 65 + double	225,00
stainless steel bright or black / dia. TWvs	1750,00
stainless steel black / dia. black	1280,00

**2,5 mm band width\* / 23 diamonds 0,11 ct**

yellow or rose gold 750 / dia. TWvs	7250,00
rose gold 750 / dia. C2 light brown	6950,00
white gold 750 / dia. TWvs	8000,00
platinum 950 / dia. TWvs	7680,00
* sizes over 59 in Au and Pt + // over 65 + double	450,00
stainless steel bright or black / dia. TWvs	1820,00
stainless steel black / dia. black	1500,00



# SOLITAIRE RING 0,20 / 0,30 ct

Ring and setting are formed like one flow, the brilliant-cut-diamond appears like tied into it. the proportions are carefully balanced. qualities and colors of diamonds are versatile. here we have listed rings with top made to excellent diamonds, a bespoke offer can be inquired.



# 101

material	retail €
<b>1,5</b> mm band width* / diamond 0,20 ct	
yellow or rose gold 750 / dia. TWvs	2340,00
rose gold 750 / dia. C2 light brown	1825,00
withe gold 750 / dia. TWvs	2380,00
platinum 950 / dia. TWvs	2350,00
* sizes over 59 in Au and Pt + // over 65 + double	55,00
stainless steel bright / diamond TWvs	1550,00
stainless steel bright / C2 light brown	975,00
stainless steel black / dia. black	795,00



# 102

2,0	mm width* / diamond 0,30 ct	
	yellow or rose gold 750 / dia. TWvs	2950,00
	rose gold 750 / dia. C2 light brown	2500,00
	withe gold 750 / dia. TWvs	3055,00
	platinum 950 / dia. TWvs	3010,00
	* sizes over 59 in Au and Pt + // over 65 + double	75,00
	stainless steel bright / diamond TWvs	1850,00
	stainless steel bright / C2 light brown	1450,00
	stainless steel black / dia. black	1050,00



102

2,0	mm width* diamond 0,30 ct zert.	Preise ab
	yellow or rose gold 750 / dia. TWvs GIA	3250,00
	withe gold 750 / dia. GIA	3375,00
	platinum 950 / dia. GIA	3325,00
	* sizes over 59 in Au and Pt + // over 65 + double	75,00



341/2,0

2,0	mm band width*	Preise ab
	yellow or rose gold 750	1625,00
	white gold 750	1775,00
	platinum 950	1720,00
	* sizes over 59 in Au and Pt + // over 65 + double	75,00
	stainless steel bright	550,00

# SOLITAIRE RING 0,50 / 0,65 ct

Ring and setting are formed like one flow, the brilliant-cut-diamond appears like tied into it.  
 The proportions are carefully balanced. qualities and colors of diamonds are versatile.  
 Here we have listed rings with top made to excellent diamonds, a bespoke offer can be inquired.



## # 103

diamond 0,50 ct

material	retail €
<b>2,5</b> mm width* / diamond 0,30 ct	Preise ab
yellow or rose gold 750 / dia. TWvs	4050,00
rose gold 750 / dia. C2 light brown	3750,00
withe gold 750 / dia. TWvs	4250,00
platinum 950 / dia. TWvs	4150,00
* sizes over 59 in Au and Pt + // over 65 + double	125,00
stainless steel bright / diamond TWsi	2475,00
stainless steel black / dia. black	1375,00

## # 104

diamond 0,65 ct

<b>2,5</b> mm width* diamond 0,65 ct zert.	Preise ab
yellow or rose gold 750 / dia. TWvs GIA	6420,00
withe gold 750 / dia. GIA	4530,00



<b>2,5</b> mm band width*	Preise ab
yellow or rose gold 750	2175,00
white gold 750	2375,00
platinum 950	2300,00
* sizes over 59 in Au and Pt + // over 65 + double	125,00
stainless steel bright	725,00



# SOLITAIRE PIN

## # 121

**S** mm width\* / 2 diamonds 0,25 ct

yellow or rose gold 750 / dia. TWvs	1995,00
rose gold 750 / dia. C2 light brown	1600,00
withe gold 750 / dia. TWvs	2050,00
platinum 950 / dia. TWvs	2035,00
stainless steel bright, golden mech.	1350,00



# KNOTRINGS maritime pure

The simple variant of this jewellery theme recalls the knots encountered on ropes, lines or cords in daily life. these robust, reliable and enduring connections give us a feeling of security.



**# 302  
-306**  
sailors knots

material	retail €
<b>1,5 mm band width*</b>	
yellow or rose gold 750	1420,00
white gold 750	1550,00
platinum 950	1550,00
* sizes over 59 in Au and Pt + // over 65 + double	55,00
stainless steel bright or black	425,00



<b>2,5 mm band width*</b>	
yellow or rose gold 750	2200,00
white gold 750	2450,00
platinum 950	2450,00
* sizes over 59 in Au and Pt + // over 65 + double	125,00
stainless steel bright or black	450,00



<b>3,2 mm band width*</b>	
yellow or rose gold 750	2800,00
white gold 750	3100,00
platinum 950	3050,00
* sizes over 59 in Au and Pt + // over 65 + double	150,00
stainless steel bright or black	500,00



# KNOTRINGS maritime 2-times pure

Knots connect, hold and embellish. in metal, they symbolize eternal unity and can never be untied. As a stylistic element, knots are convincing in various dimensions: massive or filigreed, crafted from stainless steel or precious metal, simple or with brilliant-cut diamonds, as rings for the ears or the fingers.

310 / 3,2



310 / 3,2

## # 310

2-times around  
the finger

material	retail €
<b>1,5 mm band width*</b>	
yellow or rose gold 750	1520,00
white gold 750	1650,00
platinum 950	1650,00
* sizes over 59 in Au and Pt + // over 65 + double	100,00
stainless steel bright or black	425,00
<b>2,5 mm band width*</b>	
yellow or rose gold 750	3020,00
white gold 750	3350,00
platinum 950	3250,00
* sizes over 59 in Au and Pt + // over 65 + double	250,00
stainless steel bright or black	475,00
<b>3,2 mm band width*</b>	
yellow or rose gold 750	3850,00
white gold 750	4300,00
platinum 950	4180,00
* sizes over 59 in Au and Pt + // over 65 + double	350,00
stainless steel bright or black	500,00

# KNOTRINGS maritime 2-times diamonds



310.P / 1,5



## # 310.P

2-times around the finger + diamonds

310.P / 2,5



311.P / 2,5



311.P / 3,2

310.P / 2,5

**material**

**retail €**

**1,5** mm band width\* / 23 diamonds 0,07 ct

yellow or rose gold 750 / dia. TWvs	2200,00
withe gold 750 / dia. TWvs	2350,00
platinum 950 / Brill. TWvs	2450,00
* sizes over 59 in Au and Pt + // over 65 + double	100,00
stainless steel bright or black / dia. TWvs	1380,00
stainless steel black / dia. black	1220,00

**2,5** mm band width\* / 21 diamonds 0,10 ct

yellow or rose gold 750 / dia. TWvs	3750,00
rose gold 750 / dia. C2 light brown	3625,00
withe gold 750 / dia. TWvs	4150,00
platinum 950 / dia. TWvs	4050,00
* sizes over 59 in Au and Pt + // over 65 + double	250,00
stainless steel bright or black / dia. TWvs	1480,00
stainless steel black / dia. black	1300,00

**3,2** mm band width\* / 13 diamonds 0,17 ct

yellow or rose gold 750 / dia. TWvs	4650,00
rose gold 750 / dia. C2 light brown	4450,00
withe gold 750 / dia. TWvs	5200,00
platinum 950 / dia. TWvs	5000,00
* sizes over 59 in Au and Pt + // over 65 + double	350,00
stainless steel bright or black / dia. TWvs	1625,00
stainless steel black / dia. black	1300,00

# KNOTRINGS maritime 3-times pure

Knots connect, hold and embellish. in metal, they symbolize eternal unity and can never be untied. as a stylistic element, knots are convincing in various dimensions: massive or filigreed, crafted from stainless steel or precious metal, simple or with brilliant-cut diamonds.



## # 311

3-times around  
the finger



### material

### retail €

#### 1,5 mm band width\*

yellow or rose gold 750	1880,00
white gold 750	2050,00
platinum 950	2020,00
* sizes over 59 in Au and Pt + // over 65 + double	150,00
stainless steel bright or black	450,00

#### 2,5 mm band width\*

yellow or rose gold 750	4180,00
white gold 750	4650,00
platinum 950	4500,00
* sizes over 59 in Au and Pt + // over 65 + double	350,00
stainless steel bright or black	500,00

#### 3,2 mm band width\*

yellow or rose gold 750	5600,00
white gold 750	6500,00
platinum 950	6250,00
* sizes over 59 in Au and Pt + // over 65 + double	500,00
stainless steel bright or black	525,00

#### 4 mm band width\*

stainless steel bright or black	625,00
---------------------------------	--------



# KNOTRINGS maritime 3-times diamonds

Knots connect, hold and embellish. in metal, they symbolize eternal unity and can never be untied. as a stylistic element, knots are convincing in various dimensions: massive or filigreed, crafted from stainless steel or precious metal, simple or with brilliant-cut diamonds.



310.P / 2,5

311.P / 2,5

311.P / 3,2

## # 311.P

3-times around  
the finger +  
diamonds

### material

### retail €

1,5 mm band width* / 23 diamonds 0,07 ct	
yellow or rose gold 750 / dia. TWvs	2620,00
withe gold 750 / dia. TWvs	2800,00
platinum 950 / Brill. TWvs	2880,00
* sizes over 59 in Au and Pt + // over 65 + double	150,00
stainless steel bright or black / dia. TWvs	1475,00
stainless steel black / dia. black	1250,00

2,5 mm band width* / 21 diamonds 0,10 ct	
yellow or rose gold 750 / dia. TWvs	4950,00
rose gold 750 / dia. C2 light brown	4800,00
withe gold 750 / dia. TWvs	5500,00
yellow gold 750 / dia. yellow natural	4800,00
platinum 950 / dia. TWvs	5300,00
* sizes over 59 in Au and Pt + // over 65 + double	350,00
stainless steel bright or black / dia. TWvs	1575,00
stainless steel black / dia. black	1350,00

3,2 mm band width* / 13 diamonds 0,17 ct	
yellow or rose gold 750 / dia. TWvs	6600,00
rose gold 750 / dia. C2 light brown	6380,00
withe gold 750 / dia. TWvs	7300,00
platinum 950 / dia. TWvs	6980,00
* sizes over 59 in Au and Pt + // over 65 + double	500,00
stainless steel bright or black / dia. TWvs	1920,00
stainless steel black / dia. black	1550,00



311.P / 3,2

310.P / 2,5

# OVERKNOT & STRAIGHT BAND



**# 318**  
2-times around the finger with endings



material	retail €
<b>1,5</b> mm width* without ring in between	
yellow or rose gold 750	1780,00
* sizes over 59 in Au and Pt + // over 65 + double	125,00
stainless steel bright or black	550,00
<b>2</b> mm width* without ring in between	
yellow or rose gold 750	2880,00
* sizes over 59 in Au and Pt + // over 65 + double	175,00
stainless steel bright or black	575,00

# OVERKNOT endlessly & STRAIGHT BAND

**# 348**  
2-times around the finger, endlessly



<b>1,5</b> mm width* without ring in between	
yellow or rose gold 750	1700,00
* sizes over 59 in Au and Pt + // over 65 + double	125,00
stainless steel bright or black	525,00
<b>2</b> mm width* without ring in between	
yellow or rose gold 750	2300,00
* sizes over 59 in Au and Pt + // over 65 + double	175,00
stainless steel bright or black	550,00
<b>2,5</b> mm width* without ring in between	
yellow or rose gold 750	2950,00
* sizes over 59 in Au and Pt + // over 65 + double	275,00
stainless steel bright or black	550,00

333

# STRAIGHT BAND simple

The straight band, the basic form of a wedding ring, is seen in a new way. The ring appears naturally with a finely satin finished profile and softly rounded edges – either singly or in addition – doubled or running multiply around the finger.



## # 331

Straight Band  
simple

331 / 2,0



332 / 2,0

material	retail €
<b>1,5 mm band width*</b>	
yellow or rose gold 750	715,00
white gold 750	790,00
platinum 950	775,00
* sizes over 59 in Au and Pt + // over 65 + double	55,00
stainless steel bright or black	285,00
20 diamonds pave set TWvs 0,06 ct	650,00
<b>2,0 mm band width*</b>	
yellow or rose gold 750	945,00
white gold 750	1050,00
platinum 950	980,00
* sizes over 59 in Au and Pt + // over 65 + double	75,00
stainless steel bright or black	285,00
20 diamonds pave set TWvs 0,07 ct	680,00
<b>2,5 mm band width*</b>	
yellow or rose gold 750	1420,00
white gold 750	1580,00
platinum 950	1480,00
* sizes over 59 in Au and Pt + // over 65 + double	125,00
stainless steel bright or black	285,00
Pavébesatz 18 Brillanten TWvs 0,12 ct	800,00
<b>3,2 mm band width*</b>	
yellow or rose gold 750	1875,00
white gold 750	2085,00
platinum 950	1985,00
* sizes over 59 in Au and Pt + // over 65 + double	175,00
stainless steel bright or black	300,00
17 diamonds pave set TWvs 0,22 ct	985,00

## STRAIGHT BAND 2-times / 3-times

331 / 2,0



332 / 2,0

### # 332

Straight Band  
**2-times**

material

retail €

**1,5** mm band width\*

yellow or rose gold 750	1285,00
white gold 750	1450,00
platinum 950	1380,00
* sizes over 59 in Au and Pt + // over 65 + double	100,00
stainless steel bright or black	350,00

**2** mm band width\*

yellow or rose gold 750	1865,00
white gold 750	2100,00
platinum 950	1925,00
* sizes over 59 in Au and Pt + // over 65 + double	150,00
stainless steel bright or black	375,00

**2,5** mm band width\*

yellow or rose gold 750	2620,00
white gold 750	2950,00
platinum 950	2750,00
* sizes over 59 in Au and Pt + // over 65 + double	250,00
stainless steel bright or black	375,00

333 / 2,0

### # 333

Straight Band  
**3-times**

**1,5** mm band width\*

yellow or rose gold 750	1950,00
white gold 750	2180,00
platinum 950	2050,00
* sizes over 59 in Au and Pt + // over 65 + double	150,00
stainless steel bright or black	375,00

**2** mm band width\*

yellow or rose gold 750	2780,00
white gold 750	3120,00
platinum 950	2850,00
* sizes over 59 in Au and Pt + // over 65 + double	250,00
stainless steel bright or black	400,00

**2,5** mm band width\*

yellow or rose gold 750	3875,00
white gold 750	4400,00
platinum 950	4050,00
* sizes over 59 in Au and Pt + // over 65 + double	350,00
stainless steel bright or black	400,00

332 / 2,5



# TURNING pure

The ring band turns itself in 180°  
The comprehensible bond from the rings inside through the turn to its outside  
demonstrates the meaning of this form: the coming together in all aspects.



## # 360

material	retail €
<b>1,5</b> mm band width*	
yellow or rose gold 750	750,00
white gold 750	810,00
platinum 950	800,00
* sizes over 59 in Au and Pt + // over 65 + double	55,00
stainless steel bright or black	300,00
<b>2</b> mm band width*	
yellow or rose gold 750	1140,00
white gold 750	1220,00
platinum 950	1200,00
* sizes over 59 in Au and Pt + // over 65 + double	75,00
stainless steel bright or black	325,00
<b>2,5</b> mm band width*	
yellow or rose gold 750	1580,00
white gold 750	1750,00
platinum 950	1650,00
* sizes over 59 in Au and Pt + // over 65 + double	125,00
stainless steel bright or black	350,00
<b>3,2</b> mm band width*	
yellow or rose gold 750	2450,00
white gold 750	2750,00
platinum 950	2580,00
* sizes over 59 in Au and Pt + // over 65 + double	175,00
stainless steel bright or black	400,00

# TURNING diamonds

the straight band, the basic form of a wedding ring, is seen in a new way. the ring appears naturally with a finely satin finished profile and softly rounded edges – either singly or in addition – doubled or running multiply around the finger.



## # 360.P

### material

### retail €

#### 1,5 mm band width\* / 17 diamonds 0,05 ct

yellow or rose gold 750 / dia. TWvs	1380,00
withe gold 750 / dia. TWvs	1450,00
platinum 950 / Brill. TWvs	1450,00
* sizes over 59 in Au and Pt + // over 65 + double	55,00
stainless steel bright or black / dia. TWvs	1040,00
stainless steel black / dia. black	875,00



#### 2 mm band width\* / 17 diamonds 0,07 ct

yellow or rose gold 750 / dia. TWvs	1795,00
withe gold 750 / dia. TWvs	1880,00
platinum 950 / Brill. TWvs	1820,00
* sizes over 59 in Au and Pt + // over 65 + double	75,00
stainless steel bright or black / dia. TWvs	1140,00
stainless steel black / dia. black	950,00



#### 2,5 mm band width\* / 17 diamonds 0,10 ct

yellow or rose gold 750 / dia. TWvs	2240,00
rose gold 750 / dia. C2 light brown	2095,00
withe gold 750 / dia. TWvs	2400,00
platinum 950 / dia. TWvs	2300,00
* sizes over 59 in Au and Pt + // over 65 + double	125,00
stainless steel bright or black / dia. TWvs	1280,00
stainless steel black / dia. black	1050,00

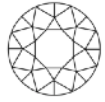


#### 3,2 mm band width\* / 13 diamonds 0,22 ct

yellow or rose gold 750 / dia. TWvs	3150,00
rose gold 750 / dia. C2 light brown	2900,00
withe gold 750 / dia. TWvs	3380,00
platinum 950 / dia. TWvs	3200,00
* sizes over 59 in Au and Pt + // over 65 + double	175,00
stainless steel bright or black / dia. TWvs	1580,00
stainless steel black / dia. black	1080,00

# BANDS INTERWOVEN diamond

Ein Ring aus zwei Bändern, ineinander verschlungen, auf dem Weg zu einem Ganzen. Im sanften Schwung der Bänder zu- und ineinander lässt sich im höchsten Punkt ein Brillant einspannen. Ein Glanzlicht, wie schwerelos getragen.



380.S / 2,0



380 / 2,0

## # 380.S

ring **with**  
diamond, form  
opened

material

retail €

### 1,5 mm band width\* / 1 diamond 0,007 ct

yellow or rose gold 750 / dia. TWvs	1580,00
white gold 750 / dia. TWvs	1725,00
platinum 950 / Brill. TWvs	1685,00
* sizes over 59 in Au and Pt + // over 65 + double	100,00
stainless steel bright or black / dia. TWvs	695,00

### 2 mm band width\* / 1 diamond 0,025 ct

yellow or rose gold 750 / dia. TWvs	2180,00
white gold 750 / dia. TWvs	2395,00
platinum 950 / Brill. TWvs	2320,00
* sizes over 59 in Au and Pt + // over 65 + double	150,00
stainless steel bright or black / dia. TWvs	810,00

### 2,5 mm band width\* / 1 diamond 0,065 ct

yellow or rose gold 750 / dia. TWvs	3050,00
white gold 750 / dia. TWvs	3380,00
platinum 950 / Brill. TWvs	3200,00
* sizes over 59 in Au and Pt + // over 65 + double	150,00
stainless steel bright or black / dia. TWvs	940,00

380.S / 2,0



# BANDS INTERWOVEN pure

## # 380

ring **without**  
diamond, form  
closed

### 1,5 mm band width\*

yellow or rose gold 750	1480,00
white gold 750	1620,00
platinum 950	1585,00
* sizes over 59 in Au and Pt + // over 65 + double	100,00
stainless steel bright or black	425,00

### 2 mm band width\*

yellow or rose gold 750	1980,00
white gold 750	2300,00
platinum 950	2080,00
* sizes over 59 in Au and Pt + // over 65 + double	150,00
stainless steel bright or black	450,00

### 2,5 mm band width\*

yellow or rose gold 750	2780,00
white gold 750	3120,00
platinum 950	2900,00
* sizes over 59 in Au and Pt + // over 65 + double	150,00
stainless steel bright or black	475,00

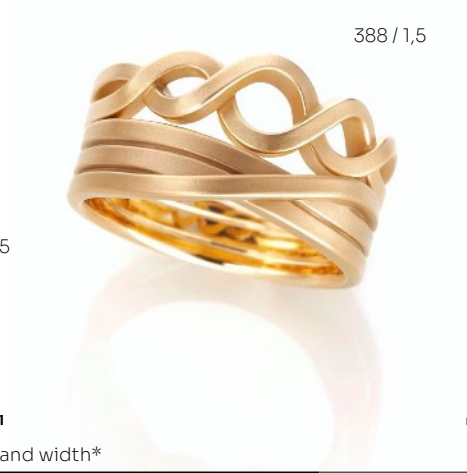
380 / 1,5



380.S / 1,5

# BANDS INTERWOVEN pure

A ring made of two pulsing lines alternately laid about each other. With atmospheric air and light in between the ring composes a space to be filled with thoughts and feeling. Diamonds can be set in pave, like a sparkling line.



388 / 1,5

341 / 1,5

## # 388

material	1,5 mm band width*	retail €
yellow or rose gold 750		1680,00
white gold 750		1930,00
platinum 950		1850,00
* sizes over 59 in Au and Pt + // over 65 + double		125,00
stainless steel bright or black		475,00

# BANDS INTERWOVEN diamonds



## # 388.P

1,5 mm band width* / 29 diamonds 0,08 ct	
yellow or rose gold 750 / dia. TWvs	2850,00
white gold 750 / dia. TWvs	2980,00
platinum 950 / Brill. TWvs	2950,00
* sizes over 59 in Au and Pt + // over 65 + double	
stainless steel bright or black / dia. TWvs	1780,00
stainless steel black / dia. black	1350,00





# LOOP RINGS pure

Not massive but stabile nonetheless, the ring encircles the finger. Reflected light makes visible the excitement and energy of this piece of jewellery. no pressure, only jewellery: as an endless band.



## # 110

material	retail €
<b>1,5</b> mm band width*	
yellow or rose gold 750	1590,00
white gold 750	1750,00
platinum 950	1720,00
* sizes over 59 in Au and Pt + // over 65 + double	100,00
stainless steel bright or black	450,00
<b>2,5</b> mm band width*	
yellow or rose gold 750	2850,00
white gold 750	3150,00
platinum 950	3000,00
* sizes over 59 in Au and Pt + // over 65 + double	250,00
stainless steel bright or black	475,00
<b>3,2</b> mm band width*	
yellow or rose gold 750	4005,00
white gold 750	4450,00
platinum 950	4280,00
* sizes over 59 in Au and Pt + // over 65 + double	350,00
stainless steel bright or black	500,00

# LOOP RINGS diamonds



## # 110.1.P

pavé set  
diamonds on  
one loop



## # 110.2.P

pavé set  
diamonds on  
two loops



### material

### retail €

#### 1,5 mm band width\* / 21 diamonds 0,08 ct

yellow or rose gold 750 / dia. TWvs	2380,00
withe gold 750 / dia. TWvs	2520,00
platinum 950 / Brill. TWvs	2520,00
* sizes over 59 in Au and Pt + // over 65 + double	100,00
stainless steel bright or black / dia. TWvs	1350,00
stainless steel black / dia. black	1200,00

#### 2,5 mm band width\* / 17 diamonds 0,08 ct

yellow or rose gold 750 / dia. TWvs	3480,00
rose gold 750 / dia. C2 light brown	3350,00
withe gold 750 / dia. TWvs	3800,00
platinum 950 / dia. TWvs	3720,00
* sizes over 59 in Au and Pt + // over 65 + double	250,00
stainless steel bright or black / dia. TWvs	1380,00
stainless steel black / dia. black	1200,00

#### 3,2 mm band width\* / 17 diamonds 0,22 ct

yellow or rose gold 750 / dia. TWvs	5090,00
rose gold 750 / dia. C2 light brown	4850,00
withe gold 750 / dia. TWvs	5600,00
platinum 950 / dia. TWvs	5500,00
* sizes over 59 in Au and Pt + // over 65 + double	350,00
stainless steel bright or black / dia. TWvs	1980,00
stainless steel black / dia. black	1500,00

#### 2,5 mm band width\* / 34 diamonds 0,15 ct

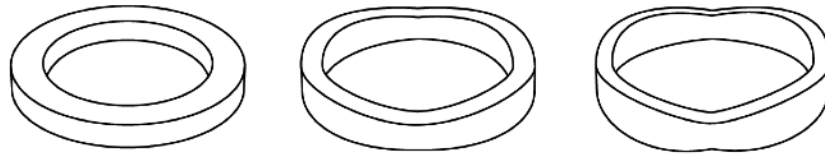
yellow or rose gold 750 / dia. TWvs	4180,00
rose gold 750 / dia. C2 light brown	3895,00
withe gold 750 / dia. TWvs	4500,00
platinum 950 / dia. TWvs	4450,00
* sizes over 59 in Au and Pt + // over 65 + double	250,00
stainless steel bright or black / dia. TWvs	1980,00
stainless steel black / dia. black	1600,00

#### 3,2 mm band width\* / 34 diamonds 0,45 ct

yellow or rose gold 750 / dia. TWvs	6080,00
rose gold 750 / dia. C2 light brown	5650,00
withe gold 750 / dia. TWvs	6620,00
platinum 950 / dia. TWvs	6420,00
* sizes over 59 in Au and Pt + // over 65 + double	350,00
stainless steel bright or black / dia. TWvs	2920,00
stainless steel black / dia. black	2150,00

# FOUR EVER

The joy of having met one another and no longer needing to flee in all directions ... inspired by the compass rose, the metal is pressed into the fourfold mould so that slender lines are created on the outside and bulges are produced along the edges. Their graining depends on the alloy and one can choose among large crystalline and smooth.



## # 442

**material**  
**3,2** mm band width\*

**retail €**

yellow or rose gold 750	1575,00
white gold 750	1725,00
platinum 950	1700,00
silver 925	450,00
* sizes over 59 in Au and Pt + // over 65 + double	150,00
4 diamonds TWvs 0,016 ct	280,00
4 diamonds C2 light brown 0,016 ct	250,00

## # 443

**4,5** mm band width\*

yellow or rose gold 750	2125,00
white gold 750	2350,00
platinum 950	2275,00
silver 925	450,00
* sizes over 59 in Au and Pt + // over 65 + double	200,00
4 diamonds TWvs 0,03 ct	310,00
4 diamonds C2 light brown 0,03 ct	285,00



## # 444

**6** mm band width\*

yellow or rose gold 750	2750,00
white gold 750	3050,00
platinum 950	2950,00
silver 925	500,00
* sizes over 59 in Au and Pt + // over 65 + double	250,00
4 diamonds TWvs 0,06 ct	380,00
4 diamonds C2 light brown 0,06 ct	325,00



## # 445

**7,2** mm band width\*

yellow or rose gold 750	3575,00
white gold 750	3950,00
platinum 950	3780,00
silver 925	500,00
* sizes over 59 in Au and Pt + // over 65 + double	300,00

# WAVE RINGS

The wave rings feature sensuously flowing, wavy surfaces reminiscent of the twisted strands of a rope. The twisted waves on the inside ensure maximum wearing comfort.



## # 173



## # 175

### material

### retail €

#### 7 mm width\*

yellow or rose gold 750	2275,00
white gold 750	2500,00
platinum 950	2350,00
* sizes over 59 in Au and Pt + // over 65 + double	175,00
stainless steel bright or black	475,00
1 diamond ø 1,0 mm 0,004 ct TWvs	75,00
1 diamond ø 1,2 mm 0,007 ct TWvs	88,00
1 diamond ø 1,5 mm 0,014 ct TWvs	110,00

## # 174

#### 11 mm width\*

yellow or rose gold 750	3375,00
white gold 750	3750,00
platinum 950	3450,00
* sizes over 59 in Au and Pt + // over 65 + double	300,00
stainless steel bright or black	525,00
4 diamonds 0,025 ct TWvs	370,00
4 diamonds 0,025 ct C2 light brown	280,00

#### 13 mm width\*

yellow or rose gold 750	4150,00
white gold 750	4650,00
platinum 950	4350,00
* sizes over 59 in Au and Pt + // over 65 + double	375,00
stainless steel bright or black	550,00
6 diamonds 0,046 ct TWvs	495,00
6 diamonds 0,046 ct light brown	435,00



## KNOT cufflinks

The simple variant of this jewellery theme recalls the knots encountered on ropes, lines or cords in daily life. these robust, reliable and enduring connections give us a feeling of security. As a stylistic element, knots are convincing in various dimensions: massive or filigreed, crafted from stainless steel or precious metal, as rings, for the ears or as cufflinks!



**# 500**  
cufflinks

material	retail €
<b>4</b> mm band width	
silver 925 nature	500,00
silver rhodium plated bright or black	575,00
iron black	550,00
stainless steel bright or black	625,00
Bronze	480,00
yellow or rose gold 750	8250,00
white gold 750	9500,00
platinum 950	8650,00

## KNOT hoops



**# 510**  
hoops

<b>15</b> mm diameter	
yellow or rose gold 750	1475,00
white gold 750	1600,00
platinum 950	1550,00
stainless steel black with golden mech.	685,00



**# 511**  
hoops

<b>20</b> mm diameter	
yellow or rose gold 750	1650,00
white gold 750	1800,00
platinum 950	1750,00
stainless steel black with golden mech.	685,00

## KNOT hoops diamonds



**# 511.P**  
hoops

<b>20</b> mm Ø / 90 diamonds 0,19 ct	
yellow or rose gold 750 / dia. TWvs	3620,00
white gold 750 / dia. TWvs	3750,00
platinum 950 / Brill. TWvs	3750,00
stainless steel bright or black / dia. TWvs	2500,00
stainless steel black / dia. black	2120,00

# KNOTS

			material	retail €
400		<b># 400</b> very small	<b>XS</b> ear pins Ø 4 x 5 mm	
			yellow or rose gold 750	795,00
			white gold 750	880,00
			platinum 950	850,00
			stainless steel black with golden mech.	575,00
401		<b># 401</b> medium	<b>M</b> ear pins Ø 6 x 7 mm	
			yellow or rose gold 750	1200,00
			white gold 750	1350,00
			platinum 950	1280,00
			stainless steel black with golden mech.	575,00
402		<b># 402</b> big	<b>L</b> ear pins Ø 7 x 9 mm	
			yellow or rose gold 750	1700,00
			white gold 750	1900,00
			platinum 950	1750,00
			stainless steel black with golden mech.	575,00
404		<b># 404</b> two long endings	ear pins L.: 12 mm	
			yellow or rose gold 750	1500,00
			white gold 750	1650,00
			platinum 950	1550,00
			stainless steel black with golden mech.	575,00
406		<b># 406</b> endlessly tightly tied	ear pins Ø 6,5 mm	
			yellow or rose gold 750	1100,00
			white gold 750	1200,00
			platinum 950	1150,00
			stainless steel black with golden mech.	575,00
407		<b># 407</b> endlessly relaxed tied	ear pins Ø 8,5 mm	
			yellow or rose gold 750	1250,00
			white gold 750	1375,00
			platinum 950	1300,00
			stainless steel black with golden mech.	575,00
408		<b># 408</b> open endings	ear pins Ø 7 x 8,5 mm	
			yellow or rose gold 750	1200,00
			white gold 750	1300,00
			platinum 950	1250,00
			stainless steel black with golden mech.	575,00
409		<b># 409</b> open endings, big variant	ear pins Ø 9 x 11 mm	
			yellow or rose gold 750	1300,00
			white gold 750	1400,00
			platinum 950	1350,00
			stainless steel black with golden mech.	575,00

# KNOTS



## # 402.P

big variant +  
diamonds



## # 407.P

knot endlessly +  
diamonds



## # 408.P

knot open +  
diamonds



## # 415.P

pendant open tied  
+ diamonds



## # 416.P

pendant endlessly  
+ diamonds



material

retail €

2,5 mm band / 44 diamonds 0,18 ct	
yellow or rose gold 750 / dia. TWvs	3100,00
rose gold 750 / dia. C2 light brown	2780,00
withe gold 750 / dia. TWvs	3300,00
platinum 950 / dia. TWvs	3250,00
stainless steel bright or black / dia. TWvs	1550,00
stainless steel black / dia. black	1250,00

1,5 mm band / 22 diamonds 0,07 ct	
yellow or rose gold 750 / dia. TWvs	1700,00
withe gold 750 / dia. TWvs	1780,00
platinum 950 / dia. TWvs	1750,00
stainless steel bright or black / dia. TWvs	1150,00
stainless steel black / dia. black	980,00

1,5 mm band / 22 diamonds 0,07 ct	
yellow or rose gold 750 / dia. TWvs	1650,00
withe gold 750 / dia. TWvs	1730,00
platinum 950 / dia. TWvs	1700,00
stainless steel bright or black / dia. TWvs	1150,00
stainless steel black / dia. black	980,00

1,5 mm band / 30 diamonds 0,09 ct	
yellow or rose gold 750 / dia. TWvs	1500,00
withe gold 750 / dia. TWvs	1550,00
platinum 950 / dia. TWvs	1520,00
stainless steel bright or black / dia. TWvs	1200,00
stainless steel black / dia. black	950,00

2,5 mm band / 35 diamonds 0,17 ct	
yellow or rose gold 750 / dia. TWvs	2325,00
rose gold 750 / dia. C2 light brown	2100,00
withe gold 750 / dia. TWvs	2450,00
platinum 950 / dia. TWvs	2420,00
stainless steel bright or black / dia. TWvs	1650,00
stainless steel black / dia. black	1200,00

1,5 mm band / 12 diamonds 0,025 ct	
yellow or rose gold 750 / dia. TWvs	905,00
withe gold 750 / dia. TWvs	940,00
platinum 950 / dia. TWvs	925,00
stainless steel bright or black / dia. TWvs	720,00
stainless steel black / dia. black	590,00

2,0 mm band / 14 diamonds 0,04 ct	
yellow or rose gold 750 / dia. TWvs	1400,00
withe gold 750 / dia. TWvs	1480,00
platinum 950 / dia. TWvs	1460,00
stainless steel bright or black / dia. TWvs	950,00
stainless steel black / dia. black	800,00

# KNOTS

414

412

413

411



## # 411

small loop with two endings

material

retail €

length 15 mm

yellow or rose gold 750	725,00
white gold 750	800,00
platinum 950	750,00
stainless steel black or bright	290,00

## # 412

medium loop with two endings

length 19 mm

yellow or rose gold 750	980,00
white gold 750	1100,00
platinum 950	1050,00
stainless steel black or bright	290,00

## # 413

loop double tied with two endings

length 19 mm

yellow or rose gold 750	1180,00
white gold 750	1280,00
platinum 950	1240,00
stainless steel black or bright	290,00

## # 414

big

length 22 mm

yellow or rose gold 750	1475,00
white gold 750	1650,00
platinum 950	1500,00
stainless steel black or bright	290,00

414



413

## # 415

open knot in two band widths

1,5 mm band, simple knot

yellow or rose gold 750	650,00
white gold 750	680,00
platinum 950	680,00
stainless steel black or bright	280,00

2,5 mm band, simple knot

yellow or rose gold 750	1250,00
white gold 750	1400,00
platinum 950	1310,00
stainless steel black or bright	300,00

## # 416

endlessly tied in two band widths

1,5 mm band, ø 9,5 mm

yellow or rose gold 750	595,00
white gold 750	635,00
platinum 950	630,00
stainless steel black or bright	250,00

2 mm band, ø 13,0 mm

yellow or rose gold 750	980,00
white gold 750	1075,00
platinum 950	1050,00
stainless steel black or bright	300,00

415 / 1,5

416 / 1,5

416 / 2,0





## BANDS IN EIGHT pure

Bands are laid in a round drive to build a figure-of-eight shape. Manually logically the bends lie in leaning towards each other and show ductility. The bends can be set with diamonds in different sizes.

	material	retail €
<b># 481</b> ear studs 1,5 / 3 mm ø eylets	<b>S</b> length 8,5 mm	
	yellow or rose gold 750	825,00
	white gold 750	875,00
	platinum 950	850,00
	stainless steel black with golden mech.	575,00
<b># 482</b> ear studs 2 / 4 mm l ø eylets	<b>M</b> length 10,5 mm	
	yellow or rose gold 750	895,00
	white gold 750	950,00
	platinum 950	925,00
	stainless steel black with golden mech.	575,00

## BANDS IN EIGHT diamonds



482.S



481.S



<b># 481.S</b> ear studs with dia. 3 mm	<b>S</b> 2 diamonds 0,25 ct TWvs	
	yellow or rose gold 750 / dia. TWvs	1995,00
	rose gold 750 / dia. C2 light brown	1600,00
	white gold 750 / dia. TWvs	2050,00
	platinum 950 / dia. TWvs	2025,00
	stainless steel bright or black / dia. TWvs	1580,00



<b># 482.S</b> ear studs with dia. 2 mm	<b>M</b> 2 diamonds 0,08 ct TWvs	
	yellow or rose gold 750 / dia. TWvs	1275,00
	rose gold 750 / dia. C2 light brown	1200,00
	white gold 750 / dia. TWvs	1350,00
	platinum 950 / dia. TWvs	1320,00
	stainless steel bright or black / dia. TWvs	790,00



<b># 482.P</b> ear studs with diamonds pavé set	<b>M</b> 20 diamonds TWvs 0,04 ct	
	yellow or rose gold 750 / dia. TWvs	1495,00
	white gold 750 / dia. TWvs	1590,00
	platinum 950 / dia. TWvs	1570,00
	stainless steel bright or black / dia. TWvs	1150,00

# BANDS IN EIGHT pure / diamonds



## # 479

pendant pure  
without diamonds

### material

**M** length 10,5 mm

yellow or rose gold 750  
white gold 750  
platinum 950  
stainless steel black or bright

### retail €

415,00  
435,00  
430,00  
240,00



## # 479.P

pendant with  
diamonds

**M** 10 diamonds TWvs 0,02 ct

yellow or rose gold 750 / dia. TWvs  
white gold 750 / dia. TWvs  
platinum 950 / dia. TWvs  
stainless steel bright or black / dia. TWvs  
stainless steel black / dia. black

700,00  
750,00  
740,00  
540,00  
475,00



## THE TURNING

## # 368

pendant pure  
without diamonds

**8** mm diameter without chain

yellow or rose gold 750  
white gold 750  
platinum 950  
stainless steel black or bright

350,00  
370,00  
400,00  
220,00



## # 368.P

pendant with  
diamonds

**8** mm diameter / 9 dia. TWvs 0,015 ct

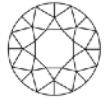
yellow or rose gold 750 / dia. TWvs  
white gold 750 / dia. TWvs  
platinum 950 / dia. TWvs  
stainless steel bright or black / dia. TWvs  
stainless steel black / dia. black

695,00  
710,00  
750,00  
565,00  
495,00



# SOLITAIRE pendants

Our solitaire pendant means the most compact way to wrap a diamond into a golden band for becoming a twinkling object for delicate chains.



**# 512**  
eyelet  
ø 1,8 mm

material	retail €
<b>3,2</b> mm diamond ~ 0,12 ct TWvs	
yellow or rose gold 750 / dia. TWvs	1110,00
rose gold 750 / dia. C2 light brown	915,00
white gold 750 / dia. TWvs	1125,00
platinum 950 / dia. TWvs	1150,00

**# 520**  
eyelet  
ø 1,8 mm

<b>3,7</b> mm diamond ~ 0,20 ct TWvs	
yellow or rose gold 750 / dia. TWvs	1620,00
rose gold 750 / dia. C2 light brown	1185,00
white gold 750 / dia. TWvs	1635,00
platinum 950 / dia. TWvs	1660,00
stainless steel bright or black / dia. TWvs	1280,00

**# 525**  
eyelet  
ø 2,0 mm

<b>4,0</b> mm diamond ~ 0,25 ct TWvs	
yellow or rose gold 750 / dia. TWvs	1750,00
rose gold 750 / dia. C2 light brown	1355,00
white gold 750 / dia. TWvs	1770,00
platinum 950 / dia. TWvs	1780,00
stainless steel bright or black / dia. TWvs	1350,00

**# 530**  
eyelet  
ø 2,2 mm

<b>4,3</b> mm diamond ~ 0,30 ct TWvs	
yellow or rose gold 750 / dia. TWvs	2070,00
rose gold 750 / dia. C2 light brown	1640,00
white gold 750 / dia. TWvs	2320,00
platinum 950 / dia. TWvs	2350,00
stainless steel bright or black / dia. TWvs	1875,00

<b>4,3</b> mm* diamond ~ 0,30 ct TWvs cert.	Preise ab
yellow or rose gold 750 / dia. TWvs GIA	2300,00
white gold 750 / dia. TWvs	2320,00
Platin 950 / Brill. TWvs GIA	2350,00

**# 540**  
eyelet  
ø 2,2 mm

<b>4,8</b> mm* diamond ~ 0,40 ct TWvs cert.	Preise ab
yellow or rose gold 750 / dia. TWvs GIA	2485,00
rose gold 750 / dia. C2 light brown	1920,00
white gold 750 / dia. TWvs GIA	2510,00
platinum 950 / dia. TWvs GIA	2535,00

**# 550**  
eyelet  
ø 2,5 mm

<b>5,2</b> mm* diamond ~ 0,50 ct TWvs cert.	Preise ab
yellow or rose gold 750 / dia. TWvs GIA	2750,00
rose gold 750 / dia. C2 light brown	2545,00
white gold 750 / dia. TWvs GIA	2785,00
platinum 950 / dia. TWvs GIA	2825,00

**# 565**  
eyelet  
ø 2,8 mm

<b>5,5</b> mm* diamond ~ 0,65 ct TWvs cert.	Preise ab
yellow or rose gold 750 / dia. TWvs GIA	5210,00
rose gold 750 / dia. C2 light brown	3320,00
white gold 750 / dia. TWvs GIA	5240,00
platinum 950 / dia. TWvs GIA	5265,00

**# 5xx**  
up from 0,30 ct

** without stone **	Preise ab
yellow or rose gold 750	525,00
white gold 750	535,00
platinum 950	540,00

## LOGO STAR earpin and pendant

four-leaf clover, cross, starlet, flower or simply a detail for closing? an element for jewelry!  
the shape of the toggle closure derives from the sign of the workshop.  
the interpretation is free for the wearers' consideration ...



### # 245

ear studs  
polished pure

material	retail €
<b>9,5</b> mm / polished, pure	
yellow or rose gold 750 / dia. TWvs	705,00
white gold 750 / dia. TWvs	775,00
platinum 950	770,00

### # 245.P

ear studs with  
diamonds  
rimless chaton

<b>9,5</b> mm / 64 diamonds 0,12 ct	
yellow or rose gold 750 / dia. TWvs	2195,00
white gold 750 / dia. TWvs	2250,00
platinum 950 / dia. TWvs	2250,00

### # 247

pendant  
polished pure

<b>9,5</b> mm / polished, pure / with eyelet	
yellow or rose gold 750	390,00
white gold 750	415,00
platinum 950	415,00

### # 247.P

pendant with  
diamonds  
rimless chaton

<b>9,5</b> mm / 32 diamonds 0,06 ct / with eyelet	
yellow or rose gold 750 / dia. TWvs	1150,00
white gold 750 / dia. TWvs	1170,00
platinum 950 / dia. TWvs	1170,00



## LOGO STAR anchor chain

four-leaf clover, cross, starlet, flower or simply a detail for closing? an element for jewelry!  
the shape of the toggle closure derives from the sign of the workshop.  
the interpretation is free for the wearers' consideration ...



### # 740

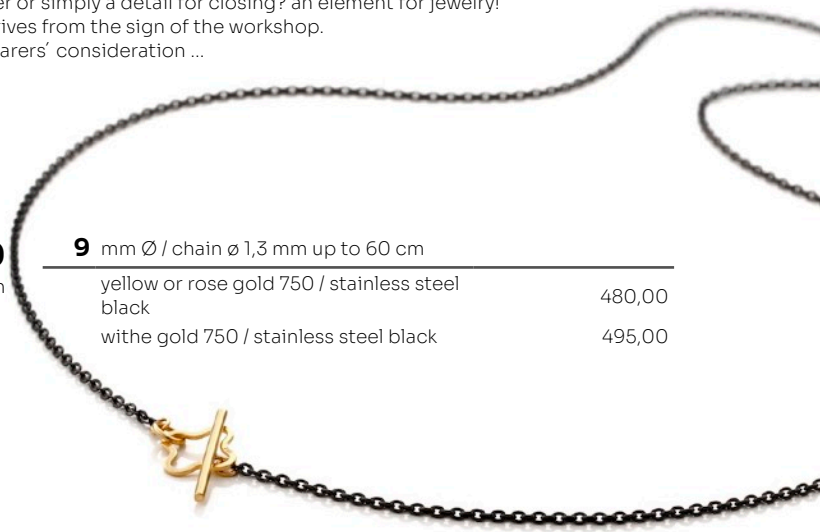
closing with chain

<b>9</b> mm Ø / chain Ø 1,3 mm up to 60 cm	
yellow or rose gold 750 / stainless steel black	480,00
white gold 750 / stainless steel black	495,00

### # 742

closing with chain

<b>11</b> mm Ø / chain Ø 2,4 mm up to 60 cm	
yellow or rose gold 750 / stainless steel black	525,00
white gold 750 / stainless steel black	550,00



# ANCHOR CHAIN

	material	retail €
<b># 760</b> chain with bayonet	<b>1,3</b> mm chain bis 45 cm / bayonet ø 1,8 mm	
	yellow gold 750 / round anchor polished	875,00
	rose gold 750 / round anchor polished	875,00
	white gold 750 / round anchor polished	1055,00
	platinum 950 / round anchor polished	1090,00
	stainless steel <b>black</b> , flat anchor chain, golden rivets, lenght up to 60 cm	325,00
<b># 762</b> chain with bayonet	<b>2,6</b> mm wide anchor chain up to 60 cm bayonet ø 2,8 mm	
	stainless steel <b>black</b> , wide anchor chain, golden rivets	325,00
<b># 763</b> chain with double clip	<b>2,6</b> mm wide anchor chain up to 60 cm double clip ø 2,0 mm	
	stainless steel <b>black</b> , wide anchor chain, golden rivets	325,00
<b># 765</b> chain with snap hook	<b>1,3</b> mm flat anchor chain up to 60 cm	
	stainless steel <b>black</b>	200,00
<b># 767</b> chain with snap hook	<b>2,6</b> mm wide anchor up to 60 cm	
	stainless steel <b>black</b>	200,00
<b># 768</b> chain with snap hook	<b>2,7</b> mm wide anchor up to 60 cm	
	stainless steel <b>black</b>	200,00
<b># 769</b> chain with snap hook	<b>3,2</b> mm round anchor up to 60 cm	
	stainless steel <b>black</b>	200,00
<b># 772</b> leather	<b>2,5</b> mm leather up to 60 cm / Bajo. ø 2,8	
	stainless steel <b>black</b> / leather	150,00
<b># 780</b> snake chain with golden rivets	<b>1,3</b> mm chain up to 60 cm / Bajo. ø 1,8 mm	
	stainless steel <b>black</b> / golden rivets	325,00



## DIAMOND PIN



**# 276**  
front half set with  
6 diamonds each

material	retail €
<b>4</b> mm Ø / pair with 12 diamonds 0,22 ct	
yellow gold 750 with TWvs	1350,00
rose gold 750 with light brown	1050,00
white gold 750 with TWvs	1420,00
yellow gold 750 with naturally yellow dia.	1475,00
platinum 950 with TWvs	1380,00
rose gold 750, <b>black</b> rhod. / <b>black</b> dia.	980,00

**# 278**  
front half set with  
6 diamonds each

<b>6</b> mm Ø / pair with 12 diamonds 0,78 ct	
yellow gold 750 with TWvs	2820,00
rose gold 750 with light brown	1850,00
white gold 750 with TWvs	2990,00
yellow gold 750 with naturally yellow dia.	2750,00
platinum 950 with TWvs	2950,00
rose gold 750, <b>black</b> rhod. / <b>black</b> dia.	1675,00

## FACETS

reflections on geometric shapes...  
the basic shape consists from twelve similar facets. when wearing, the earrings show an exciting play by reflecting the light and the crystal-like body changes its shape in every perspective.  
hollow made, light and easy to wear...



**# 804**  
ear studs

<b>XS</b> Ø ~ 4 mm	
yellow or rose gold 750	685,00
white gold 750	740,00
platinum 950	805,00

**# 805**  
ear studs

<b>S</b> Ø ~ 7 mm	
yellow or rose gold 750	1350,00
white gold 750	1450,00
platinum 950	1575,00

**# 806**  
ear studs

<b>M</b> Ø ~ 10 mm	
yellow or rose gold 750	1730,00
white gold 750	1875,00
platinum 950	1950,00

**# 816**  
pendant

<b>M</b> Ø ~ 10 mm	
yellow or rose gold 750	850,00
white gold 750	920,00
platinum 950	940,00

**# 817**  
pendant

<b>L</b> Ø ~ 14 mm	
yellow or rose gold 750	1200,00
white gold 750	1320,00
platinum 950	1300,00

# RASPBERRY

The sweetness and the freshness of the berry contain in the golden or black object. The whole fruit as an ear drop or a pendant are transformed to a sculpturous jewelry in a fine manner. The fruits' elements are reduced to a circle for ear studs or a small pendant.

## # 840

earrings



### material

earrings length ~ 25 mm

### retail €

yellow or rose gold 750	2350,00
white gold 750	2570,00
platinum 950	2470,00
stainless steel black with golden hooks	1250,00
1 diamond ø 1,0 mm 0,004 ct TWvs	80,00
each further	70,00

## # 841

single pendant  
for a chain



pendant without chain

yellow or rose gold 750	1080,00
white gold 750	1170,00
platinum 950	1130,00
stainless steel black	395,00
1 Brillant ø 1,0 mm 0,004 ct TWvs	80,00
jeder weitere	70,00

## RASPBERRY curl & ring

## # 842

curls as earrings



8 mm ø earrings

yellow or rose gold 750	825,00
white gold 750	890,00
platinum 950	890,00
stainless steel black, golden mech.	550,00

## # 844

curls singe as  
pendants for a  
chain, two sizes

8 mm ø pendant without chain

yellow or rose gold 750	350,00
white gold 750	375,00
platinum 950	375,00
stainless steel black	215,00

11 mm ø pendant without chain

yellow or rose gold 750	415,00
white gold 750	460,00
platinum 950	460,00
stainless steel black	215,00

## # 845

ring



ring

yellow or rose gold 750	1550,00
white gold 750	1700,00
platinum 950	1650,00
* sizes over 59 in Au and Pt + // over 65 + double	200,00
stainless steel black	485,00

# LEAVES

They not only beautify the summer, the leaves' stylized shape harmoniously and effortlessly forms rings and jewellery for the wrist or the ears. The second leaf is simultaneously mobile jewellery and the closure mechanism.



**# 226**

**material**

**retail €**

**S** length 45 mm

yellow or rose gold 750	950,00
white gold 750 (16% palladium)	1025,00
platinum 950	1025,00



**# 225**

**M** length 55 mm

yellow or rose gold 750	1075,00
white gold 750 (16% palladium)	1175,00
platinum 950	1150,00

**# 224**

**L** length 70 mm

yellow or rose gold 750	1250,00
white gold 750 (16% palladium)	1350,00
platinum 950	1325,00



**# 271**

**S** length 40 mm

yellow or rose gold 750	1685,00
white gold 750 (16% palladium)	1825,00
platinum 950	1800,00



**# 272**

**M** length 50 mm

yellow or rose gold 750	1685,00
white gold 750 (16% palladium)	1825,00
platinum 950	1800,00

**# 273**

**L** length 60 mm

yellow or rose gold 750	1685,00
white gold 750 (16% palladium)	1825,00
platinum 950	1800,00

# FERN

A band of gold rolls up gently into a curl.

Like a leaf of fern each earring shows a special moment of being tightly rolled or of being relaxed and opened - a snapshot of motion.

Lightweight tension, wrought by hand.



## LUNA earrings

An interpretation of timeless, classic, round earrings. The lines of the forged rings reflect the light in a variety of ways - lightweight, flexible and filigree - a light drawn in circles.



**# 851**

material

retail €

**S** ø 25 mm, 2 diamonds 0,03 ct TWvs

yellow or rose gold 750	1825,00
white gold 750 (16% palladium)	1950,00
platinum 950	2050,00

**# 852**

**M** ø 32 mm, 2 diamonds 0,03 ct TWvs

yellow or rose gold 750	2075,00
white gold 750 (16% palladium)	2225,00
platinum 950	2380,00

**# 853**

**L** ø 38 mm, 2 diamonds 0,03 ct TWvs

yellow or rose gold 750	2380,00
white gold 750 (16% palladium)	2580,00
platinum 950	2720,00



## LOOPS double

An other variation of our classic earring model. two bands follow around each other - slightly interwoven, voluminous and light, elastic as always. A small diamond makes the bands turn and covers the ear whole.

**# 261**

**S** length 33 mm, 2 dia. 0,03 ct TWvs

yellow or rose gold 750	2220,00
white gold 750 (16% palladium)	2400,00
platinum 950	2550,00

**# 262**

**M** length 42 mm, 2 dia. 0,03 ct TWvs

yellow or rose gold 750	2540,00
white gold 750 (16% palladium)	2780,00
platinum 950	2875,00



## LOOPS simple

The band glides on the breeze and seems alternately wide or narrow ... fleeting yet simultaneously present, this piece of jewellery is a snapshot of motion. The metal band forms a long arc to create a piece of jewellery for the ears that accentuates the wearer's neck and is easy to wear. The clasp elegantly covers the earhole. as jewellery for the forearm, the metal band follows the natural shape of the wrist. Each time this piece is put on and snapped closed, its wearer enjoys operating the simple yet secure insertion mechanism.



# 251

material

retail €

**S** length ~ 40 mm

yellow or rose gold 750	1700,00
white gold 750 (16% palladium)	1880,00
platinum 950	1850,00

# 252

**M** length ~ 50 mm

yellow or rose gold 750	1925,00
white gold 750 (16% palladium)	2120,00
platinum 950	2100,00



# 253

**L** length ~ 65 mm

yellow or rose gold 750	2150,00
white gold 750 (16% palladium)	2380,00
platinum 950	2320,00



# 232

earrings loop  
parallel

length 35 mm, 2 dia. 0,03 ct TWvs

yellow or rose gold 750	2375,00
white gold 750 (16% palladium)	2565,00
platinum 950	2580,00



# 234

bracelet  
loop parallel

extension 15,5 - 17 cm

yellow or rose gold 750	3425,00
white gold 750 (16% palladium)	3850,00
platinum 950	3780,00

optional:

2 diamonds 0,05 ct TWvs	325,00
-------------------------	--------

## LOOPS parallel

Out of a golden square profile two leaves enfold. Forging brings them to lightness and flexibility. The symmetrical shape opens up a fine line for light and look through and simultaneously serves as intelligent way for saving tension for opening and closing.

## OVAL BAND earrings

The oval band is made by forging – the band is formed from round gold blanks, while at the same time the elastic tension builds up in the material. With a relaxed swing, the ribbon rolls into an earring or bracelet – thin and light as a feather, the satined surface shows high-contrast reflections.



**# 821**

**material**

**retail €**

**S** ø 20 mm, width 8,5 mm

yellow or rose gold 750	1520,00
white gold 750 (16% palladium)	1650,00
platinum 950	1700,00

**# 822**

**M** ø 23 mm, width 10 mm

yellow or rose gold 750	1950,00
white gold 750 (16% palladium)	2100,00
platinum 950	2200,00



**# 823**

**L** ø 26 mm, width 12 mm

yellow or rose gold 750	2430,00
white gold 750 (16% palladium)	2680,00
platinum 950	2750,00



## OVAL BAND bracelet

**# 825**

bracelet

**S** 15 mm width, ø 50 - 62 mm

yellow or rose gold 750	3850,00
white gold 750 (16% palladium)	4250,00
platinum 950	4020,00

**# 826**

bracelet

**M** 20 mm width, ø 50 - 62 mm

yellow or rose gold 750	5025,00
white gold 750 (16% palladium)	5565,00
platinum 950	5250,00

**# 827**

bracelet

**L** 25 mm width, ø 50 - 62 mm

yellow or rose gold 750	6370,00
white gold 750 (16% palladium)	7080,00
platinum 950	6800,00



## LA LINEA

Charged with sensitive tension, a golden band curls around the wearer's ear, cheeky, casual and highly decorative at the same time. If you look a little deeper you will discover the calligraphic style. Through precise forging, the earrings gain strength in the simplicity of their lines...



# 206

material

retail €

**S** length 36 mm

yellow or rose gold 750	1180,00
white gold 750 (16% palladium)	1285,00
platinum 950	1300,00



# 208

**L** length 44 mm

yellow or rose gold 750	1500,00
white gold 750 (16% palladium)	1640,00
platinum 950	1650,00

## DRAGONFLY earrings

This jewellery for the ears flutters, yet effortlessly remains faithful to its wearer. The wrought process determines the form: Raised areas remain narrow, flat areas become wide. the result is a fluent shape with inherent tension that simultaneously serves as the clasp mechanism.



# 202

**S**  $\varnothing$  ~ 30 mm

yellow or rose gold 750	1800,00
white gold 750 (16% palladium)	1970,00
platinum 950	1950,00



# 201

**M**  $\varnothing$  ~ 38 mm

yellow or rose gold 750	2100,00
white gold 750 (16% palladium)	2300,00
platinum 950	2250,00

# 200

**L**  $\varnothing$  ~ 50 mm

yellow or rose gold 750	2630,00
white gold 750 (16% palladium)	2900,00
platinum 950	2800,00

## DRAGONFLY bracelet



# 210

extension 16 - 18 cm

yellow or rose gold 750	3750,00
white gold 750 (16% palladium)	4200,00
platinum 950	3980,00

## INFORMATION ABOUT THE SUSTAINABILITY:

Each piece of jewelry from Oliver Schmidt's workshop is individually handmade. We source our materials onsite from responsible dealers. For example, our precious metals are supplied by refineries that belong to the Responsible Jewellery Council (RJC). The gold is recovered from secondary sources, i.e. recycled gold.

The dealers who supply our gemstones comply with United Nations' resolutions on conflict-free provenance.

Our stainless steel jewelry is made from skin- and body-tolerable surgical alloys. All of our pieces of jewelry are made from pure metal. Coatings are used only on our blackened jewelry: the surface is coated with a highly robust and abrasion-resistant layer that was industrially developed and is applied by industrial methods.

## INFORMATION ABOUT THE BLACK COATING PVD:

PVD (physical vapor deposition) is a method which relies on partially ionized metal vapor to manufacture thin, metal-based, extremely hard coatings. The vapor is produced by the so-called "sputtering" process, in which highly energetically charged ions of noble gas are fired at a metal body inside a vacuum chamber.

Special characteristics:

extremely hard – resistant to abrasion – resistant to tarnishing – odorless – antiallergenic

Because of the coating's high degree of hardness, PVD is industrially utilized to make surfaces more resistant to abrasion. Fields of application include, for example, machining, medical technology, knives and timepieces.

We began using this technology ten years ago. After having determined that the coating is indeed robust and durable, we developed the combination of black plated stainless steel and brilliant-cut diamonds. The gemstones are set into the rings only after the rings have undergone the PVD coating process.

If you have any further questions, please feel free to contact us.

Thank you very much!

Oliver Schmidt